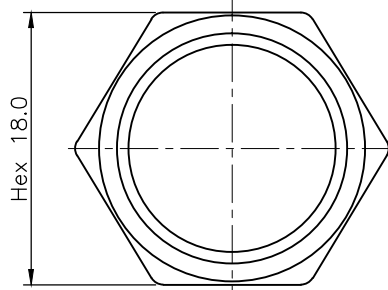
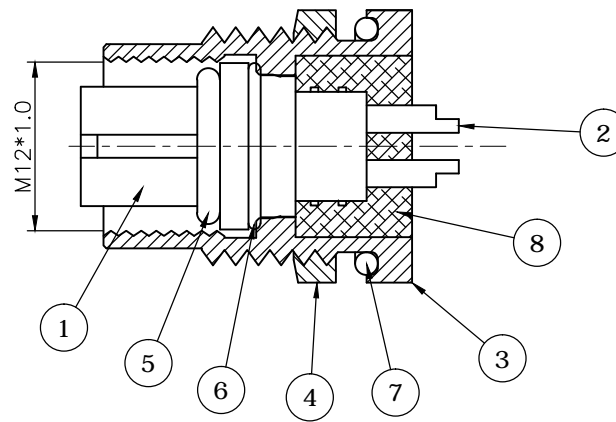
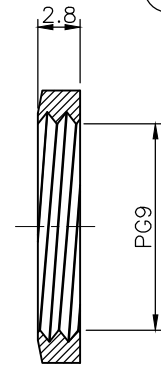


CUT OUT



NUT


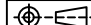


REV.	DESCRIPTION	DRAWN	DATE
1	INITIAL RELEASE	FROS	2017/06/30
2	ECR220421001	TIM	2022/04/21

SPECIFICATION:

1. Current Rating: 4A
2. Voltage Rating: 250V
3. Waterproof: IPX7
4. Operating temperature range: -40°C~+85°C

NO.	PART NAME	DESCRIPTION
8	EPOXY	EF400A & EF400B, Black
7	O-RING	EPDM
6	O-RING	EPDM
5	O-RING	EPDM
4	NUT	Brass, Nickel plating
3	SHELL	Brass, Nickel plating
2	CONTACT	Brass, 10u" Gold plating over Nickel
1	HOUSING	PBT, UL94V-0, Black

UNLESS OTHERWISE SPECIFIED TOLERANCE				 WWW.ATTEND.COM.TW	
UNIT:	DECIMAL	LINEAR	ANGLES		
mm	X.	±0.50	±5°		
	X.X	±0.25	±3°		
	X.XX	±0.12	±1°		
DRAWN	Fros	2017/06/30	DRAWN NAME:		
CHECKED	Tim	2017/06/30	M12 A- Code Receptacle, 4Pin Female Straight Solder Type Front Fastened		
APPROVED	Ken	2017/06/30	PRODUCT NO.	216A-04FAF	
 SCALE 2/1		SHEET 1/1	SIZE A4	FILE NAME	216A-04FAF_B_2