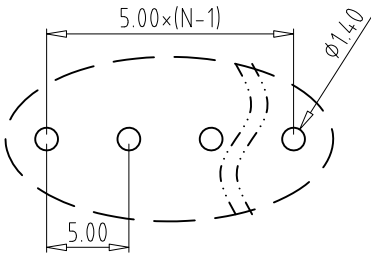


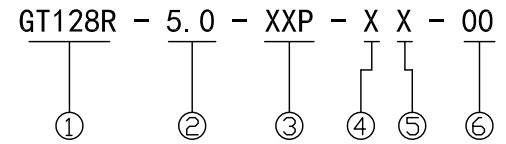
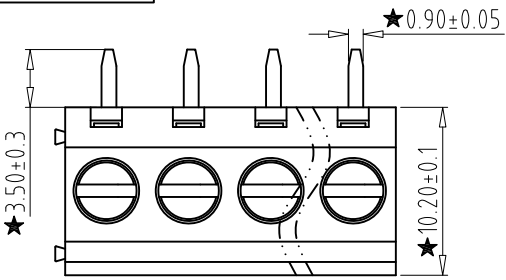
REV	CONTENT	CHK	DATE
V0.0	CONTENT	MYZ	21.06.26



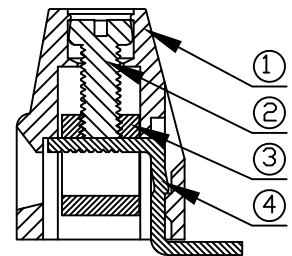
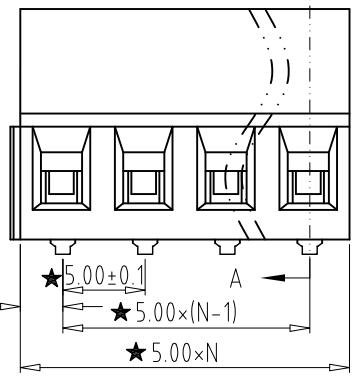
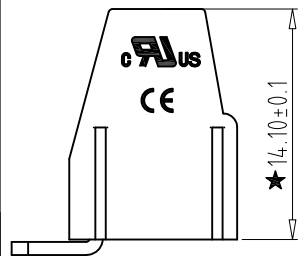
PCB LAYOUT

Electrical :

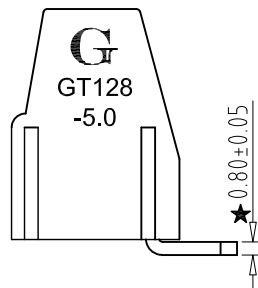
- | | | |
|--|------------------|--------------------|
| | UL | IEC |
| 1. Rated Voltage : | 300V | 250V |
| 2. Rated Current : | 12A | 18A |
| 3. Torque Value : | M2.5 , 3.54Lb.in | M2.5 , 0.4N.m |
| 4. Wire Range: | 24-12AWG | 2.5mm ² |
| 5. Stripping Length : | 6-7mm | |
| 6. Withstanding Voltage : | AC2000V/1Min. | |
| 7. Operating Temperature : | -40°C ~ +105°C | |
| 8. RoHS Compliance | | |
| 9. Safty Approval : | UL CE | |
| 10. "★" is the key quality control point | | |



- ① Series No. ④ 1 Single Pitch
 2 Double Pitch
- ② Pitch ⑤ Color: 1 Grey
 2 Blue
 3 Black
 4 Green
 5 Orange
 6 Red
 7 Transparent
 8 Yellow
 9 White
- ③ Poles
02 02Contacts
03 03Contacts
...
24 24Contacts
- ⑥ Customer Request: 00--Standard



SECTION A-A



4	PIN HEADER	XX	N	BRASS	Tin Plated
3	BLOCK	XX	N	BRASS	Ni Plated
2	SCREW	XX	N	STEEL	Zn Plated
1	HOUSING	XX	1	PA66 UL94V-0	SEE NOTE

Total Pitch Tolerances in mm										Nominal dimension range in mm										⊥		≡		-		//	
over	to	over	to	over	to	over	to	over	to	over	to	over	to	over	to	over	to	over	to	0	over	0	over	0	100	0	100
0	30	53	70	90	115	150	250	350	500	0	30	53	70	90	115	150	200	250	320	0	10	0	100	0	100	0	150
±0.18	±0.20	±0.25	±0.3	±0.35	±0.44	±0.60	±0.70	±0.85	±0.20	±0.25	±0.30	±0.35	±0.44	±0.55	±0.70	±0.80	±0.90	0.2	0.3	0.3	0.2	0.3	0.5				

ITEM	NAME OF PART	NO. OF PART	Q'TY	MATERIAL	NOTE
DWG.	MYZ	DATE	21.06.26	SIZE	A4 UNITS mm SHEET/OF 1/1
CHK.	DATE			SCALE	1:1
APP.	DATE				
NAME				GT128R-5.0-XXP-XX-00	
DWGNO.				XXXX	

Grolten 宁波冠泰电子有限公司
NINGBO GOLTEN ELECTRONICS CO., LTD.