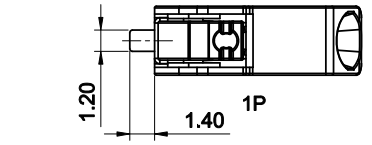
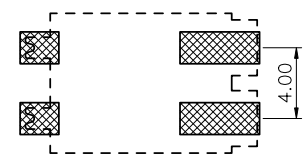
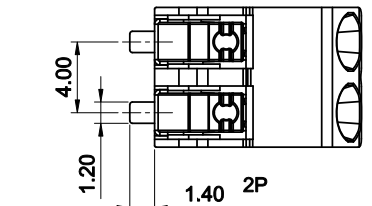
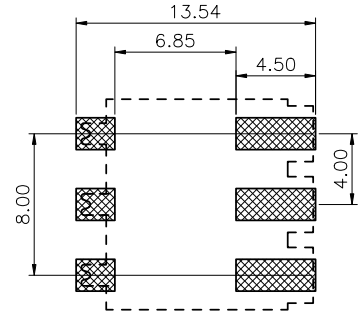
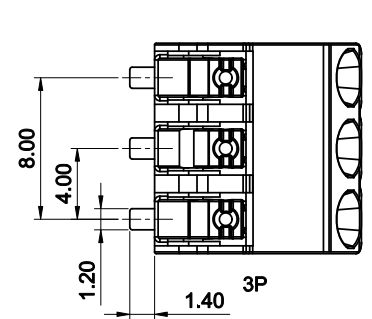


Dept	Qty
DC	1
ED	1
IE	1
ISO	1
PD	1
R&D	1
SD	1
QA	1
QC	1
QE	1

REV.	DESCRIPTION	DRAWN	CHECKED	APPROVED
A	NEW RELEASE	JLZ 11/02/22'		



Recommend PCB layout
Tolerance:±0.05mm

NOTES:

1.Materials:

1.1. Insulator: High Temperature ,Ivory,UL94 V-0 Rated, RoHS,REACH compliance.

1.2. Contact: Copper Alloy, Plating Matt Tin .

2.Specifications:

2.1. Temperature Range: -45~+105°C.

2.2. Contact Resistance: 20mΩ maximum.

2.3. Insulation Resistance: 1000MΩ minimum.

2.4. Voltage Rating: 320V AC/DC.

2.5. Current Rating: 9A max per pin.

2.6. Application wire range:

1.single solid wire: 0.2-0.75mm².

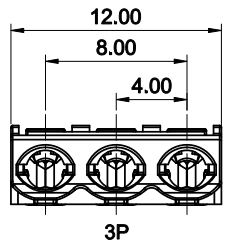
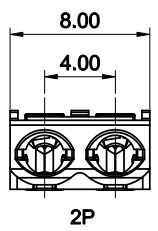
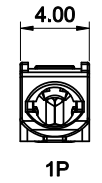
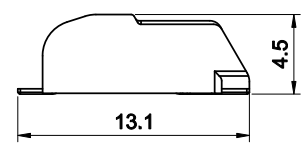
2.stranded type wire: 24-18AWG.

2.7. Resistance to soldering heat: 260°C,3-5seconds.

3. Product Number Code:

DS - LED - X

No. of positions
01: 1p 02: 2p 03: 3p



GENERAL TOLERANCE		ANGLE TOLERANCE		PROJECTION		TITLE	4.00mm LED Series
X.	±0.60	X.	±5°	UNITS	mm		Terminal Block SMT Type
.X	±0.38	.X	±3°	SHEET SIZE	A4	SERIES	DS-LED SERIES
.XX	±0.25	.XX	±2°				
DRAWING TYPE		CUSTOMER					
SCALE	1:1	SHEET	1 OF 1				
DRAWING NO.	C-DS-LED-X-A						